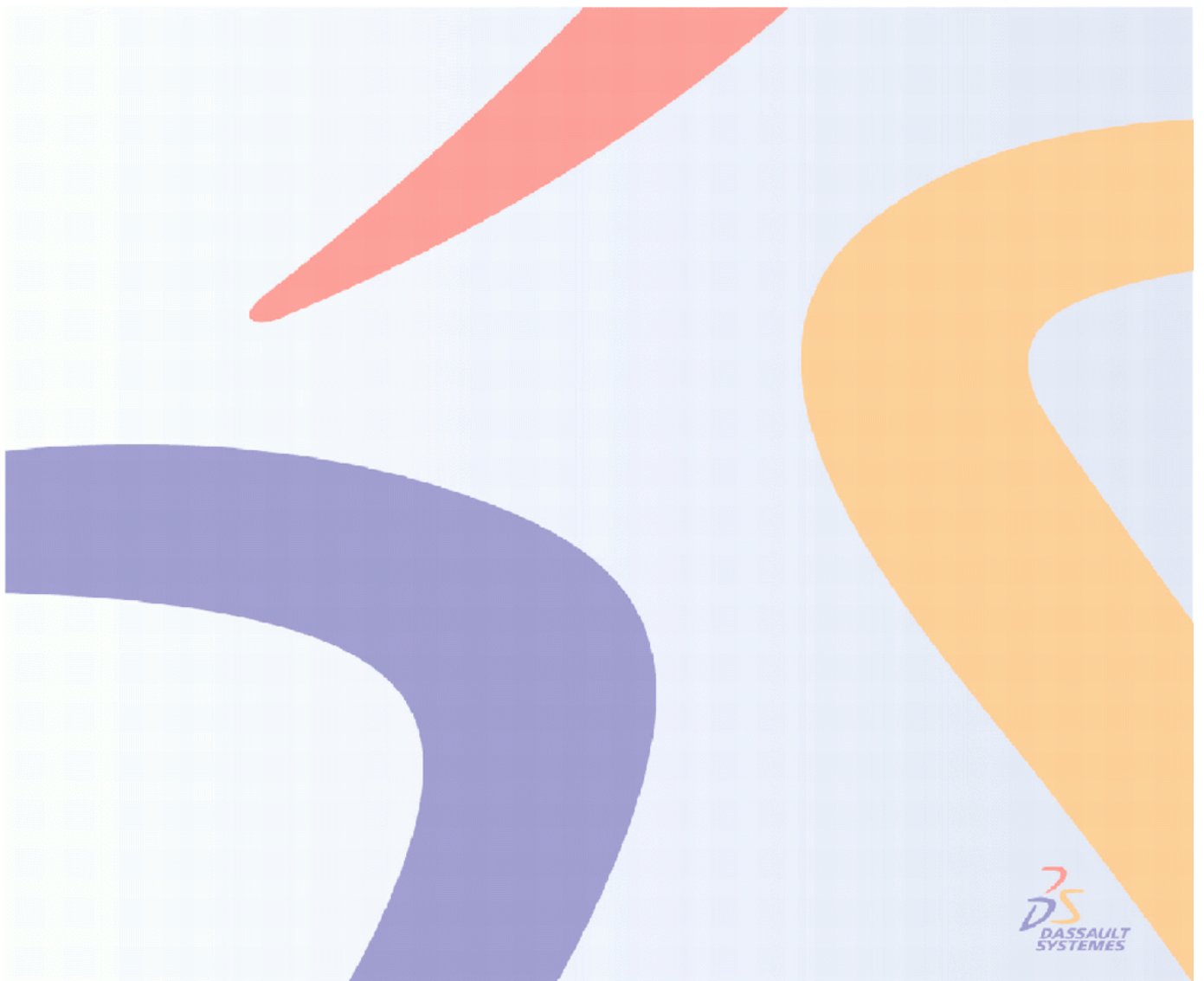


ENOVIA SmarTeam V5R18 Course Material Catalog

March 2008 Edition



ENOVIA SmarTeam V5R18 Course Material Catalog

SMARTTEAM Course Material	3
SMT Solutions	3
SED: ENOVIA SmarTeam Editor (EDU-SMT-E-SED-F - V5R18)	4
SEE: ENOVIA SmarTeam Supply Chain Engineering Exchange (EDU-SMT-E-SEE-F - V5R18)	
SFF: ENOVIA SmarTeam Fundamentals (EDU-SMT-E-SFF-F - V5R18)	7
STA: ENOVIA SmarTeam Administration for Foundation, Editor & Web Editor (EDU-SMT-E-STA-F -	
STI: ENOVIA SmarTeam Installation for Foundation, Editor & Web Editor (EDU-SMT-E-STI-F - V5R	
TPU: ENOVIA SmarTeam - CATIA Integration (EDU-SMT-E-TPU-F - V5R18)	10
WED: ENOVIA SmarTeam Web Editor (EDU-SMT-E-WED-F - V5R18)	11

SMARTTEAM Course Material

SMT Solutions



Course Code	EDU-SMT-E-SED-F
Brand & Release	SMARTEAM V5R18
Duration	2 days
Language	English
Level	Fundamentals
Method	Companion

Training Material References

Instructor Foils: EDU-SMT-E-SED-FI-V5R18
 Foils: EDU-SMT-E-SED-FF-V5R18
 Exercises: EDU-SMT-E-SED-FX-V5R18

Objectives

Upon completion of this course you will be able to :

- Build upon your knowledge of ENOVIA SmarTeam Fundamentals.
- Use the ENOVIA SmarTeam - Editor and Workflow products proficiently.
- Create, search, view, and manage your Product Data.
- Create, customize, work with, and manage Business Processes using the various Workflow modules.

Participants' Profile

Reviewers, Engineers, Designers, Sales & Support Staff, and Managers.

Prerequisites

SFF: SmarTeam Fundamentals (EDU-SMT-E-SFF-F - V5R18) Companion

Content

This course will make you proficient in the use of SmarTeam - Editor and Workflow. You will learn how to manage the lifecycle of data stored in SmarTeam. To match the theory, a detailed PLM-based Master Exercise, split into short steps, allows you to learn how to work with SmarTeam in an industrial context.

- Getting Started with ENOVIA SmarTeam
- Managing a Project
- Viewing ENOVIA SmarTeam Information
- Managing Object Views
- Searching ENOVIA SmarTeam Information
- Using enovia SmarTeam - Office Integration
- Lifecycle Management
- Item Behavior
- Workflow
- Using SMARTEAM File Explorer

Exercises

- Ex. 1: Step 1: Connect to SMARTEAM / All sectors
- Ex. 2: Start a New Change Process / All sectors
- Ex. 3: Step 3: Modify the Defected Part / All sectors
- Ex. 4: Step 4: Create Searches and Views / All sectors
- Ex. 5: Step 5: View and Annotate the Documents / All sectors
- Ex. 6: Step 6: Manage the Process / All sectors
- Ex. 7: Step 7: Attach the Parts / All sectors
- Ex. 8: Step 8: Complete the Process / All sectors



Course Code	EDU-SMT-E-SEE-F
Brand & Release	SMARTEAM V5R18
Duration	1 day
Language	English
Level	Fundamentals
Method	Companion

Training Material References

Instructor Foils: EDU-SMT-E-SEE-FI-V5R18
Foils: EDU-SMT-E-SEE-FF-V5R18
Exercises: EDU-SMT-E-SEE-FX-V5R18

Objectives

Upon completion of this course you will be able to:

- Perform generic operations such as define integration settings, set the reconciliator environment
- Create a work package
- Perform queries
- Apply reconciliator rules
- Prepare SMARTEAM to receive product data
- Reconcile data
- Perform operations on reconciled data

Participants' Profile

CATIA and SMARTEAM Users having to exchange data between companies.

Prerequisites

TPU: SMARTEAM CATIA Integration (EDU-SMT-E-TPU-F - V5R17)
Companion

Content

In the context of expanding production networks, fast and reliable product data exchange between Original Equipment Manufacturers and their partners is a key element in Product Life Cycle Management.

This course focuses on the bidirectional exchange of engineering packages between CATIA and SMARTEAM.

More specifically you will learn how to perform generic reconciliation operations, export data, and define reconciliation rules.

Getting Started

- Introduction to SMARTEAM Supply Chain

Exchange

- Need for Supply Chain Collaboration
- Managing Supply Chain Exchange with SMARTEAM
- Introducing SEE (Supply Chain Engineering Exchange)
- Typical Process
- Benefits
- Working with SEE
 - About Reconciliator
 - Perform Settings for SEE
 - SEE Window
- General Description
 - About Loading Documents
 - Reconciliation Process

Identifying Documents

- Performing Queries
 - Identification Methods
 - How to perform Query
 - Customizing the Queries
- Viewing the Documents
 - Using the CATIA View
 - Using the CATIA 3D View
 - Using the List View
- Customizing Queries
 - Why do we Customize Queries
 - Types of Query Customization
 - How to Customize Queries

Defining Reconciliation Rules

- Why Reconciliation Rules
- Types of Rules
- Identifying Rules in CATIA Tree
- Applying Rules using Global Sets
- How to Apply Rules

Exercises

None



Course Code	EDU-SMT-E-SFF-F
Brand & Release	SMARTTEAM V5R18
Duration	0.5 day
Language	English
Level	Fundamentals
Method	Companion

Training Material References

Instructor Foils: EDU-SMT-E-SFF-FI-V5R18 Foils: EDU-SMT-E-SFF-FF-V5R18

Objectives

Upon completion of this course you will be able to... <ul style="list-style-type: none">- Understand the basics of PLM and ENOVIA SmarTeam.- Understand how ENOVIA SmarTeam stores and manages different types of Product information.- Understand the basic concepts of Lifecycle Management and Workflow
--

Participants' Profile

ENOVIA SmarTeam - Editor Users

Content

<ul style="list-style-type: none">- Introduction to ENOVIA SmarTeam- ENOVIA SmarTeam Basics- Lifecycle Basics- Workflow Basics

Exercises

Ex. 1: Initiating and Handling a Process / All sectors
--



Course Code	EDU-SMT-E-STA-F
Brand & Release	SMARTEAM V5R18
Duration	3 days
Language	English
Level	Fundamentals
Method	Companion

Training Material References

Instructor Foils: EDU-SMT-E-STA-FI-V5R18
Foils: EDU-SMT-E-STA-FF-V5R18
Exercises: EDU-SMT-E-STA-FX-V5R18

Objectives

In this course you will learn how to create a Data Model for a customer. All related topics like Vault configuration and Workflow design will be broached.

Participants' Profile

The course is aimed for new SMARTEAM Administrators

Prerequisites

SMARTEAM Fundamentals (SFF)

Content

SMARTEAM Administration Tools (overview)
The Data Model
SMARTEAM Data Model Designer
SMARTEAM databases and related utilities
Setting up Profile Cards
The Sequence Designer
Default Values
Lookup Table
User Maintenance
Project-based Authorizations
Script Maintenance
Using the Menu Editor Utility
NLS – National Language Support
Vault Configuration & Administration
Admin Functionality
Setting Up the Lifecycle Options
Lifecycle Rules Setup
Integration Tools Setup
Design Copy Tool
Common File Objects
SMARTEAM Import / Export
Workflow Design & Administration
Managing a Flow Process

Exercises

Ex. 1: Data Modeling and MSDE database (60min) / All sectors
Ex. 2: Project Based Authorizations (45min) / All sectors
Ex. 3: Form Design and Script Maintenance (45min) / All sectors
Ex. 4: System Configuration and Lifecycle Rules Setup (20min) / All sectors
Ex. 5: Import/Export & Workflow (30min) / All sectors
Ex. 6: Vault Maintenance and Life cycle Rules Setup (30min) / All sectors
Ex. 7: Integration Tools Setup (30min) / All sectors
Ex. 8: Import/Export & Workflow (30min) / All sectors



Course Code	EDU-SMT-E-STI-F
Brand & Release	SMARTEAM V5R18
Duration	1 day
Language	English
Level	Fundamentals
Method	Companion

Training Material References

Instructor Foils: EDU-SMT-E-STI-FI-V5R18
Foils: EDU-SMT-E-STI-FF-V5R18
Exercises: EDU-SMT-E-STI-FX-V5R18

Objectives

Understanding SMARTEAM Architecture.
Installation of SMARTEAM Foundation, Editor, Web Editor products.

Participants' Profile

The course is aimed for new SMARTEAM IT Administrators

Prerequisites

SMARTEAM User Fundamentals

Content

SMARTEAM Architecture
Hardware and Software requirements
Foundation Services Overview
SMARTEAM Core Services
SMARTEAM Foundation Installation
SMARTEAM Editor Installation
SMARTEAM Web Server Installation
Pre-Installation Setup
Pre-Installation
Installation
SMARTEAM Silent installation
Backup the system

Exercises

Ex. 1: Create Administrative User (15min) / All sectors
Ex. 2: Install SMARTEAM Foundation (20min) / All sectors
Ex. 3: Install SMARTEAM Editor (20min) / All sectors
Ex. 4: Install SMARTEAM Web Editor (20min) / All sectors
Ex. 5: Install SMARTEAM Viewer (20min) / All sectors
Ex. 6: Install SMARTEAM Markup Monitor (20min) / All sectors



Course Code	EDU-SMT-E-TPU-F
Brand & Release	SMARTEAM V5R18
Duration	1 day
Language	English
Level	Fundamentals
Method	Companion

Training Material References

Instructor Foils: EDU-SMT-E-TPU-FI-V5R18
 Foils: EDU-SMT-E-TPU-FF-V5R18
 Exercises: EDU-SMT-E-TPU-FX-V5R18

Objectives

Upon completion of this course you will be able to :

- Manage CATIA products with SMARTEAM
- Manage the various CATIA links and lifecycles associated with CATIA products
- Understand how the concepts of Relational Design and Collaborative Design are implemented
- Use Properties Mapping
- Use Standard CATIA Parts and Catalogs

Participants' Profile

Engineers, CAD Designers, Suppliers and Team Leaders involved in product development

Prerequisites

SFF: SmarTeam Fundamentals (EDU-SMT-E-SFF-F - V5R18)
 SED: SmarTeam Editor (EDU-SMT-E-SED-F - V5R18)

Content

This course will help you to understand the finer aspects of managing CATIA Parts and Assemblies, maintaining the dependencies and integrity while performing lifecycle operations within SMARTEAM. It will also introduce you the concepts of Collaborative Design and Relational Design and how to apply them using SMARTEAM.

- Introduction to CATIA Integration
- Basic Operations in ENOVIA SmarTeam
- Assembly Management
- CATIA Links in ENOVIA SmarTeam
- Lifecycle Management
- Relational Design
- Collaborative Design
- Mapping of Properties
- Standard Parts and Catalogs
- ENOVIA SmarTeam Tools
- Course Sum Up

Exercises

- Ex. 1: Basic Operations in SMARTEAM / All sectors
- Ex. 2: Assembly Management / All sectors
- Ex. 3: Lifecycle Management / All sectors
- Ex. 4: Relational Design / All sectors
- Ex. 5: Mapping Properties / All sectors
- Ex. 6: Standard Parts and Catalogs / All sectors
- Ex. 7: SMARTEAM Tools / All sectors



Course Code	EDU-SMT-E-WED-F
Brand & Release	SMARTEAM V5R18
Duration	1 day
Language	English
Level	Fundamentals
Method	Companion

Training Material References

Instructor Foils: EDU-SMT-E-WED-FI-V5R17
Foils: EDU-SMT-E-WED-FF-V5R17
Exercises: EDU-SMT-E-WED-FX-V5R17
Instructor Foils: EDU-SMT-E-WED-FI-V5R18
Foils: EDU-SMT-E-WED-FF-V5R18
Exercises: EDU-SMT-E-WED-FX-V5R18

Objectives

- Build upon your knowledge of SmarTeam Fundamentals
- Use the SmarTeam - Web Editor proficiently
- Create, search, view, and manage your Product Data using Web Editor
- Use the integrated Workflow functionality to initiate and work with Processes in a collaborative environment

Participants' Profile

Engineers, Designers, Managers, Sales & Support Staff, and Suppliers who want to learn SmarTeam - Web Editor for their Collaborative PLM (cPLM) needs.

Prerequisites

SFF: SmarTeam Fundamentals (EDU-SMT-E-SFF-F - V5R18) Companion

Content

This course is designed to teach you how to work with SMARTEAM - Web Editor. You will learn how to manage the lifecycle of SMARTEAM data, and work with this data. You will be able to immediately practice what you have learnt in a real-life scenario.

- Getting Started with the Web Editor
- Browsing Projects and Documents
- Viewing Information
- Using Search Facility
- Creating and Managing Information
- Performing Lifecycle Operations
- Using the Workflow Facility

Exercises

- Ex. 1: Step 1: New User / All sectors
Ex. 2: Step 2: Search for Part / All sectors
Ex. 3: Step 3: Create a Defect Analysis Report / All sectors
Ex. 4: Step 4: Initiate an ECR Process / All sectors